

Managing Transport Modelling

for non-modellers

**LONDON
BIRMINGHAM
MANCHESTER
SHEFFIELD**

1 day training course, **5** influential speakers,
7 hours of interactive learning

A full day workshop aimed at de-mystifying 'transport modelling'.

LONDON

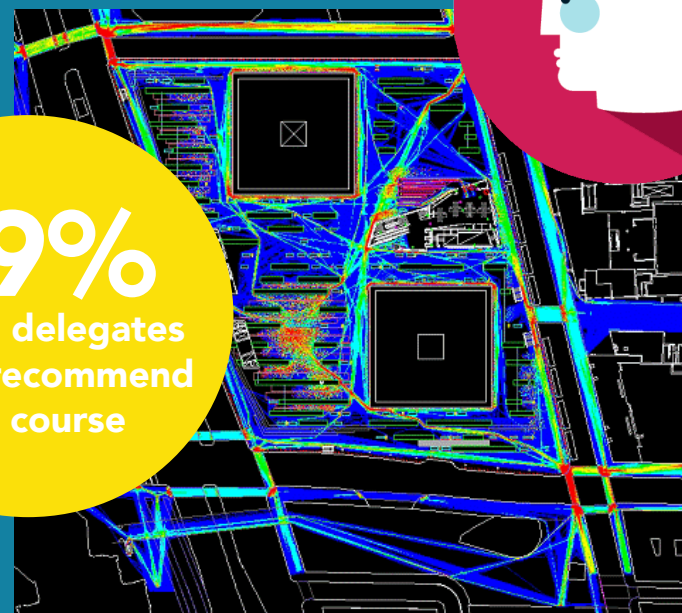
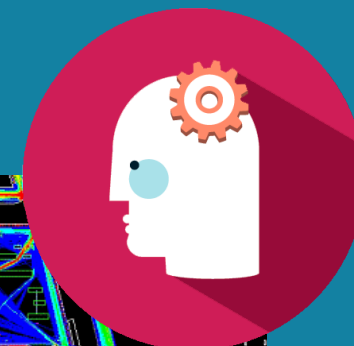
5 May 2020
9.00 - 4.30pm
Central London
Cost: £299 +vat

BIRMINGHAM - MANCHESTER - SHEFFIELD

2020 DATES TBC
9.00 - 4.30pm
Locations: Central
Cost: £299 +vat

Team of 10 or more? Contact us to discuss more dates

99%
of past delegates
would recommend
this course



Managing Transport Modelling

for non-modellers

LONDON: 5 May 2020

SHEFFIELD: 2020 Date TBC

BIRMINGHAM: 2020 Date TBC

MANCHESTER: 2020 Date TBC

Times: 9.00am - 4.30pm

Cost: £299 +vat

Book now:

www.tftp-training.co.uk

e: info@tftp-training.co.uk

Team of 10 or more?

Contact us to discuss more dates

AIMS & OBJECTIVES

To provide non-modellers aspiring to reach Transport Planning Professional (TPP) status, with an introduction to Transport Modelling. It will help you to get the most out of your models and avoid unrealistic expectations, without having to become a transport modeller.

CPD Certificate

of attendance will be awarded to all delegates.

5 INFLUENCERS

ALAN BAILES

Managing Director
The Transportation Consultancy

PILO WILLUMSEN

Willumsen Advisory Services

PHILLIPPE PERRET

Associate Director
CitiLogik Ltd

PAUL JACKSON

Tracsis

PHIL CLARKE

Global Technology Lead Transport Modelling
Jacobs

"Enjoyable, informative course with some very good speakers" **George**

"Really interesting, covered lots of topics from a wide breadth of backgrounds" **Sophie**

"Course provided a useful update to my knowledge on transport planning/modelling or appraisal." **James**

"The course was insightful and provided an overview of the key areas of transport modelling." **Elisabeth**

BOOK NOW

Only 30 spaces for each date

We expect these to go quickly due to the high calibre and mix of great speakers we have.

7 HOURS, 7 TOPICS

- 1. Role and relevance of transport modelling**
How to use modelling to assist decision-making. Assumptions, constraints and requirements.
- 2. The four stage model, Part 1**
Zoning, networks, Trip generation – Distribution; generalised costs; strengths and limitations, etc.
- 3. The four stage model, Part 2**
Mode choice, Logit explained intuitively, strengths and limitations, Static Assignment, junction delays, equilibrium, time of travel choice); both sessions using very simple equations but emphasising on the intuitive interpretation, strengths and limitations.
- 4. Data collection, current and new**
What data do you have to collect for the modelling process; new techniques now available to the modeller.
- 5. Interpreting results**
Assessing the quality of a model, types of model outputs, the role of GIS, use of model outputs, the role of judgement, common issues.
- 6. The future; dealing with uncertainty**
CAVs, changing urban landscape and MaaS. Scenario Planning.
- 7. Managing a Modelling project**
Defining scope and resources, preparing and Monitoring a Work Programme, allocating resources, limiting scope growth, Assumptions and Uncertainty logs, documentation, handover.
- 8. Panel Discussion**
A lively discussion.

Disclaimer: Topics and speakers may be subject to change to meet current industry needs or due to speakers unavailability. Please contact us to confirm details for your specific course date.